

## TAPE BORE GAGES



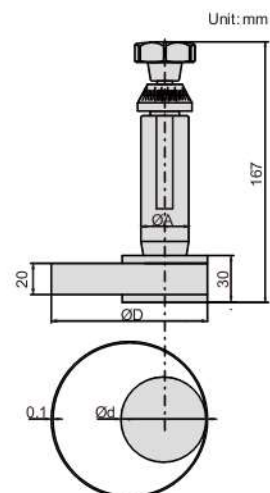
MEASURE INTERNAL DIAMETER OF FLEXIBLE MATERIALS (FOR EXAMPLE, BELT)

- Graduation: 0.1mm
- Accuracy: 0.2mm

(mm)				
Code	Range ØD	Ød	ØA	Measuring depth
2430-24	14-24mm	13.5	13	15-60
2430-40	22-40mm	21.5	21	15-60
2430-60	35-60mm	34.5	30.5	15-96
2430-100	55-100mm	54.5	30.5	15-106
2430-180	95-180mm	94.5	30.5	15-106
2430-255	170-255mm	169.5	30.5	15-106
2430-330	245-330mm	244.5	30.5	15-106



2430-100



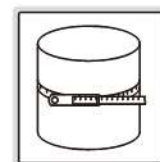
## CIRCUMFERENCE TAPES

ATTENTION: BASIC MODEL

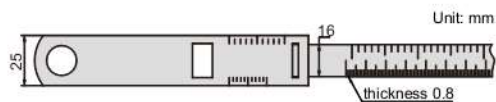
- Graduation: 0.1mm
- Measure diameter and circumference of pipes, trees, tires, etc.
- Laser engraved scale
- Made of stainless steel



7114-950



Code	Circumference range	Diameter range	Accuracy	
			Circumference	Diameter
7114-950	60-950mm	Ø20-300mm	±1.5mm	±0.5mm
7114-2200	940-2200mm	Ø300-700mm	±1.5mm	±0.5mm
7114-3460	2190-3460mm	Ø700-1100mm	±1.5mm	±0.5mm



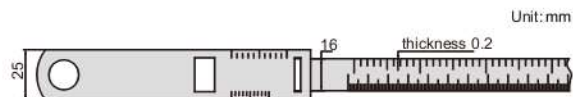
## CIRCUMFERENCE TAPES



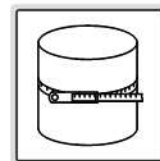
- Graduation: 0.1mm
- Measure diameter and circumference of pipes, trees, tires, etc.
- Laser engraved scale
- Made of stainless steel



7115-3460



Code	Circumference range	Diameter range	Accuracy	
			Circumference	Diameter
7115-950 *	150-950mm	Ø50-300mm	±0.60mm	±0.20mm
7115-2200	940-2200mm	Ø300-700mm	±0.60mm	±0.20mm
7115-3460	2190-3460mm	Ø700-1100mm	±0.60mm	±0.20mm
7115-4720	3450-4720mm	Ø1100-1500mm	±0.90mm	±0.30mm
7115-5980	4710-5980mm	Ø1500-1900mm	±0.90mm	±0.30mm



\* When diameter range Ø50-100mm, the accuracy of circumference is ±0.90mm, diameter is ±0.30mm.

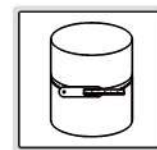


### CIRCUMFERENCE TAPES

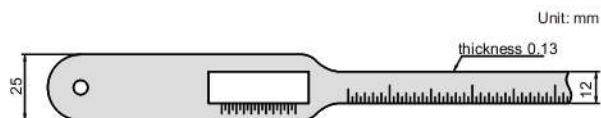
- Measure diameter of cables, thin plastic pipes, etc., which may deform
- Laser engraved scale
- Made of stainless steel



7116-115



Code	Diameter range	Graduation	Accuracy
7116-115	Ø20-115mm	0.05mm	±0.10mm
7116-230	Ø100-230mm	0.05mm	±0.10mm
7116-330	Ø200-330mm	0.05mm	±0.15mm
7116-620	Ø300-620mm	0.05mm	±0.20mm



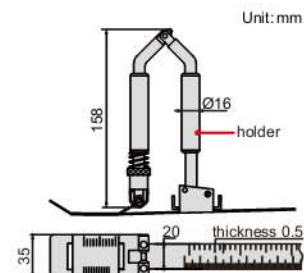
### INTERNAL CIRCUMFERENCE TAPES

- Measure internal diameter and circumference of tubes, belts, etc.
- Laser engraved scale
- Made of stainless steel
- Optional accessory: Holder (code 7125-HOLDER)



7125-1550

Code	Circumference range	Diameter range	Graduation	Accuracy	
				Circumference	Diameter
7125-1550	720-1550mm	Ø230-490mm	0.1mm	±0.35mm	±0.20mm
7125-2200	940-2200mm	Ø300-700mm	0.1mm	±0.35mm	±0.20mm
7125-3620	2190-3620mm	Ø700-1100mm	0.1mm	±0.45mm	±0.23mm
7125-4720	3450-4720mm	Ø1100-1500mm	0.1mm	±0.45mm	±0.23mm
7125-5980	4710-5980mm	Ø1500-1900mm	0.1mm	±0.50mm	±0.25mm
7125-7230	5970-7230mm	Ø1900-2300mm	0.1mm	±0.55mm	±0.27mm
7125-8500	7220-8500mm	Ø2300-2700mm	0.1mm	±0.55mm	±0.27mm



application



#### HOLDER(OPTIONAL)

Code	Remark
7125-HOLDER	Suitable for internal circumference taps

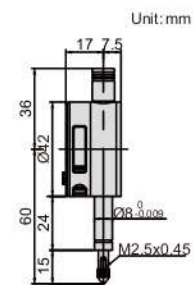
- Button function:
  - in/mm: short press for inch/metric conversion
  - long press to change measuring direction
  - ABS: short press for absolute/incremental measurement
  - long press to preset data
  - 0/ON: short press to turn on when power is off
  - short press to set zero when power is on
  - long press to turn off
- CR1632 battery, automatic power off
- Data output
- Optional accessory: data output cable (code 7306-40, 7302-SPC3A, 7305-SPC1A), contact points (page 102~103)



### COMPACT DIGITAL INDICATORS



2114-51F



Code	Range	Resolution	Accuracy	Hysteresis	Remark
2114-5F *	5mm/0.2"	0.01mm/0.0005"	20µm	10µm	flat back
2114-51F *	5mm/0.2"	0.001mm/0.00005"	5µm	2µm	flat back

\* Supplied with manufacturer inspection certificate traceable to NIST USA